

Colchester District



essex.police.uk/Colchester

Hello!

Welcome to our monthly newsletter, which will keep you up to date on what we're doing to keep communities safe in Colchester. It will focus on:

- The work of the Community Policing Team and Local Policing Team
- Crime trends
- Crime prevention
- How you can contact us

The Community Policing Team includes the Town Centre Proactive Team. Their work includes responding to issues and carrying out proactive work, including public engagement, crime prevention, crime disruption, and safeguarding vulnerable people. The teams include specialist Missing Persons and Children's and Young Person officers, who work with partners in education and social care to protect vulnerable people from harm.

The Local Policing Team's main role is to respond to calls for assistance from members of the public, but they also carry out proactive patrols.

Our Colchester community and local policing officers are supported by detectives working in the Criminal Investigation Department, Domestic Abuse Investigation Team, and Crime and Public Protection Command. They investigate the more serious crimes that occur in north Essex, safeguard victims and bring offenders to justice.

Our priorities—in partnership with the Community Safety Partnership—mirror the Essex Police Force Plan for 2020/21

To investigate and tackle:	To support and protect:
<ul style="list-style-type: none">• Violence in all its forms• Online crime• Anti-social behaviour• Gangs and organised crime• Safety/crime on the roads• Domestic abuse• Burglary	<ul style="list-style-type: none">• Children and vulnerable people• Victims of crime• Visible policing in communities

Colchester has a very clear focus on:

Violence – disrupting those who commit serious organised crime and to dismantle the supply of controlled drugs in the district. We will target those who carry knives and commit violence, ensuring Colchester remains a safe place for all.

Vulnerability – we will ensure we engage with our communities to understand their needs and deliver policing to safeguard those who are vulnerable in our community.

Victims – we will provide victims with a first-class service.

Visibility – we will be visible in our communities to provide reassurance and reduce the fear of crime.





T/Chief Inspector Jon
Evans

"We are here to help you,
keep you safe and catch
criminals".



Essex Police – Colchester



Follow @CInspHuddleston or
@EPColchester



<http://www.essex.police.uk>

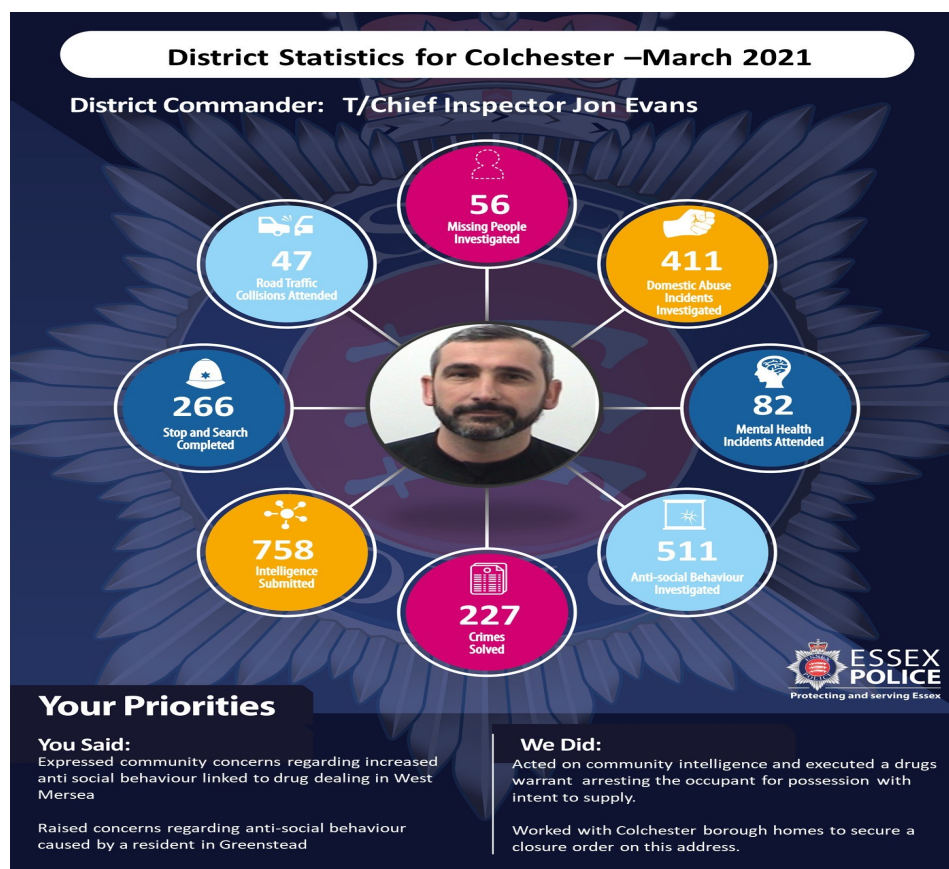
Dear All,

As we all move forward with the gradual lifting of Covid restrictions, the local policing team continue to focus our main efforts on Victims, Violence, Vulnerability and Visibility.

Our Police Officers will continue to be visible in the day time economy and night time economy areas across Colchester working with our partner agencies to provide reassurance and a safe/friendly environment for the community.

Should you consider participating in further social activities, please check the government's website to ensure that this is in conjunction with the current legislation.

The Colchester District has seen a spike in crime related to thefts of catalytic convertors spread across the district. We are working hard behind the scenes to apprehend those that are responsible, but please be mindful of where you park your vehicles and security advice can be found on our social media pages.



Dealing with Anti Social Behaviour

Another month—Another great piece of joint working between the community policing team and Colchester borough homes. Following a large number of reports of anti social behaviour from an address in Greenstead we have worked together and secured a closure order on this property to ensure there is no further issues from this address. A closure order can range from a partial closure order, where only named persons can be on the premises, to a full closure order whereby nobody can be on the premises, those found to be in contravention of a closure order are liable for arrest and prosecution. It is a great tool to keep those in our communities safe and deal robustly with people who allow their properties to be used for anti social behaviour or crime.



“Street Artist” going to court



Noticing an increase in graffiti within the town centre the Town Policing Team began an investigation into the “tags” found around the town. They have successfully secured enough evidence to charge a 26 year old man from the town with 12 counts of criminal damage and one count of breaching a community protection notice. The town team have previously dealt with a number of incidents for graffiti and will continue to do so against those who feel they can “tag” and damage property and buildings.

Ensuring Road Safety

Our community team, Special constabulary and road traffic team have been working together to improve the safety of drivers on our roads. We have undertaken a number of speed checks in the district over the past month. We have been in Layer, Birch, Stanway, Tollgate, Boxted, Abberton, Blackheath, Salcott and Tiptree to name a few!

Did you know while officers are conducting speed checks, they are also looking out for vehicles of interest that are linked to a range of crime and are happy to incorporate dealing with this along with dealing with the road traffic matters they see!

If you feel an area could benefit from speed checks please let us know—
Colchestercommunitypolicingteam@essex.police.uk



Drug Warrants



Since the start of 2021 the community policing team have executed 10 warrants. This is in addition to the warrants from our operation Raptor teams and other departments.

This month saw warrants executed in Greenstead, Tiptree and West Mersea in response to reports of drug dealing and anti social behaviour around the drug use. Enquiries are still ongoing around these warrants and the substances found in each address.

If you have information about drug activity you can report it anonymously through crimestoppers or by contacting Essex Police via our website or the 101 telephone system.



Some of this months activity on social media



Essex Police - Colchester District

29 March at 19:06 · 🌐

With the return of grassroots sport today, your local policing team took the time out AFTER they FINISHED their tour of duty, to put together this video to show, support and encourage your little grassroot sports participants.

We wish all of our grassroots clubs the best with the re-start of their sports and encourage everyone to follow the guidelines set by their governing bodies and clubs to ensure everyone is kept safe and the re-start is safe and fun for all those involved.

#epcolchester



Essex Police - Colchester District

25 March at 18:00 · 🌐

Officers from the community have been out on foot patrols around Greenstead today.

After finishing off the patrols in Greenstead, they headed back to the station and seized this e-scooter on the way. Privately owned e-scooters are currently illegal to ride in public.

#yousaidwedid

#epcolchester



Essex Police in Colchester District @EPColchester · Mar 27

PC Sharplin, PC Dryden-Last, PC Upton, PC Barlow, SC Nowicka and SC Cardy worked hard recovering suspected stolen items following a theft from a lorry in Stanway on 22nd March. 4 suspects in total released under investigation. #CrimeDoesntPay



Essex Police - Colchester District

28 March at 09:15 · 🌐

Officers from the Community team were in Tiptree during the week conducting Speed checks in the 30MPH area around Thurstable school.

Most drivers stuck to the speed limit and quite a few were well under, however we had to speak to one driver who was clocked at 44Mph.

#NoExcuse

The driver has been given a ticket and educated in the appropriate manner.

#Yousaidwedid

#Epcolchester



Essex Police - Colchester District

22 March at 18:00 · 🌐

This van was driving around #Colchester last night when it was spotted by one of our dog units QZ22.

It was briefly lost from sight by the unit however when it was located the driver was no where to be seen.

Where could he be?

It is quite hard to hide from a dog unit but it makes it a bit easy if you don't go very far, make noise and don't close your van door properly. The driver was found hiding in the back of his van along with 14 containers of Red Diesel.

The van was running on Red diesel and was seized along with the 14 containers and the driver will have to have an chat with HMRC in the very near future.



Essex Police in Colchester District @EPColchester · Mar 7

Out in #tiptree this afternoon following reports of ASB. #highvispatrols #yousaidwedid #communitypolicing



Follow us on social media-



Essex police Colchester District



@EPColchester



Conclusion of murder trial

Reece McHutcherson stabbed Murdoch Brown five times in Colchester, leaving him to die in the street, in the early hours of 7 May, 2019. The 20-year-old, of Pillow Way, Buckingham, was jailed for life, to serve a minimum of 20 years. Three of his associates were sentenced as follows -

Jay Dice, 23, of Mayville Road, Leytonstone, was jailed for a total of six years and 19 weeks for conspiracy to pervert the course of justice and being concerned in the supply of class A drugs.

Toyn Williams, 29, of Winchester Road, Hale End in East London, was jailed for a total of seven years and six months for conspiracy to pervert the course of justice and being concerned in the supply of class A drugs.

Kayley Hodgkinson, 32, of Cedars Road, Colchester, was jailed for three years for conspiracy to pervert the course of justice.

A jury heard Murdoch Brown was attacked after he and his brother Robert arrived in the Greenstead area in the early hours of 7 May, 2019.

Robert had been in debt to a drugs line and planned to speak to someone from the gang to explain how he would pay it back.

The brothers were told to go to Buffett Way, where they met McHutcherson and Dice. Murdoch was then attacked. Detective Chief Inspector Stephen Jennings, of the Kent and Essex Serious Crime Directorate, said:

"Murdoch Brown had done nothing that could even remotely justify the appalling acts of violence inflicted upon him. He had no opportunity to defend himself against Reece McHutcherson, who felt a man's life was worth the price for a £300 unpaid debt.

"His death has devastated his family and robbed his children of their father, and my thoughts remain with Murdoch's loved ones, who have lost him in the most horrendous of circumstances.

"This case highlights the ruthlessness of drugs gangs, who are prepared to use violence and intimidation to keep drug users, rivals and even their own members in check.

"Every day we're taking out drugs lines, putting people before the courts, and protecting the vulnerable people they exploit and threaten.

"But enforcement is not enough to eradicate drugs gangs and the harm they cause.

"The reasons why people become involved in gangs or a lifestyle that brings them into contact with them are complex.

"It's only by working together as a community that we can prevent people from steering down that path."

District commander Chief Inspector Jon Evans said:

"My thoughts are with Murdoch Brown's family and loved ones, who have suffered an unimaginable loss.

"Any death, especially in such horrific circumstances, also affects the wider community and we have been working closely with residents in the Greenstead area and our partners to ensure people feel safe.

"We have been tackling the scourge of drug dealing and the anti-social behaviour and violence associated with it, by identifying and arresting those suspected of being involved and putting them before the courts.

"We have also carried out regular patrols to identify criminals and keep people safe.

"None of this has stopped, despite the challenges of the coronavirus pandemic, and we will continue to carry out this work to make sure the minority don't blight the community for the majority of law-abiding residents."

Essex Police is also part a multi-agency Violence and Vulnerability Unit, which is mainly focused on gangs, county lines and child criminal and sexual exploitation.

It carries out intervention, awareness and education programmes to support young people and vulnerable adults who are being, or at risk of being, exploited and involved in crime.

You can contact [independent charity Crimestoppers 100% anonymously](#) on 0800 555 111 to report drug dealing or knife related crime, or you can contact Essex Police on 101, online or using 999 in an emergency.



CHILDREN AND YOUNG PERSONS OFFICERS UPDATE

Hate Crimes are becoming very more frequent amongst young people which begs the question are you sure you know what your children are doing online? Group chats on social media are seeing children falling foul to offences under Malicious Communications Act 1998. These can be aggravated by insulting race/religion/ sexuality and the other protected characteristics.

It is important for you as parents to ensure that your children are not taking part in any group chats or conversations where offensive images are being shared. The effect of this crime on the victim is life long and being found guilty of a hate crime can have adverse effects on your future employment. Don't let your children send abuse, don't let them take part in group chats that you have no knowledge of and if they are a victim of such a crime don't let them suffer in silence and report it to the police.'



Domestic Abuse Problem solving teams

New Domestic Abuse Problem Solving teams were launched across the County from Monday 1st March 2021, which now sees a dedicated problem solving team in each of the three Local Policing Areas, each consisting of problem solving officers; to support victims of domestic abuse and offender management officers; to target perpetrators of abuse. The teams will be working closely alongside partner agencies to provide additional support to victims, helping to break the cycle of abuse and to address victim barriers to engagement with the Criminal Justice System. The teams will also be targeting the most prolific offenders to reduce repeat and serial victimisation and to enforce criminal orders to reduce offending.

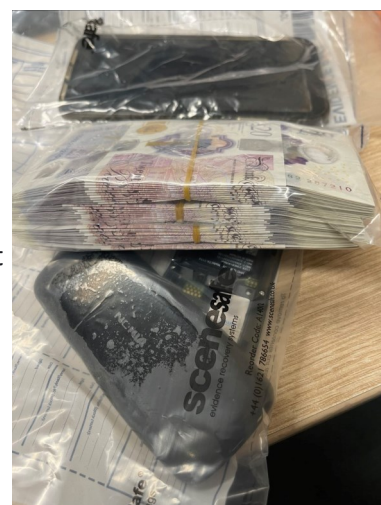
Early successes have already seen individual support provided to vulnerable victims, perpetrators apprehended and victims re-engaged with police investigations.

These teams will be working closely with our already formed domestic abuse investigation teams.

If you are the victim of domestic abuse, or know somebody who is, please report it. You can do this in an emergency by dialling 999 or in a non emergency situation calling 101 or using an online report via the Essex police website. If you want to remain anonymous around concerns for somebody else, you can use the crimestoppers website to report.

OPERATION RAPTOR

Our operation Raptor team is designated to prevent and detect county line gang crime. In Colchester they carry out proactive intelligence led patrols, warrants and investigations to stop county line operations running into Colchester. In March the team have successfully executed warrants in Colchester and in London to ensure those involved in dealing Class A drugs in our town are brought to justice. The team work closely with the London gangs unit and the community policing team to build intelligence and act on that information to bring offenders to justice. The Op Raptor teams have secured a number of charges whereby drugs have not been present at arrest but through thorough investigation they have secured sufficient evidence to go on and secure convictions at court.



Crime prevention advice

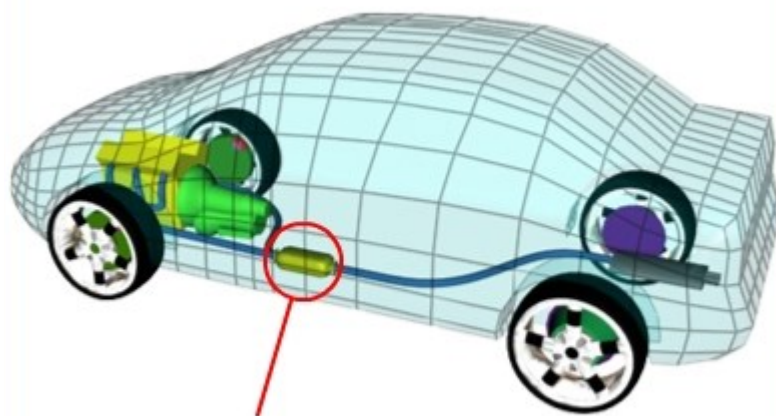
Catalytic Converter Thefts

We have seen an increase both locally and nationally in the theft of catalytic converters. Catalytic converters form part of your cars exhaust system and contain precious metals, of which the price of have increased over the past years.

To reduce the risk of having your catalytic converter stolen, you should:

- Park your car in a locked garage where possible, but if this isn't an option, then park it in a well-lit and well-populated area
- Park close to fences, walls or a kerb with the exhaust being closest to the fence, wall or kerb to make the theft more difficult
- Avoid parking your vehicle half on the pavement and half on the road, as this may make it easier for thieves to access the catalytic converter
- If there is a fleet of vehicles, park the low clearance vehicles to block the high clearance vehicles. This will obstruct access underneath
- If parking in a public car park, consider parking alongside other cars and facing you bonnet towards the wall if possible. With the catalytic converter positioned at the front of your vehicle, this will make it harder for thieves to get close enough to steal it
- For thefts occurring on driveways, consider the use of a Secured by Design (SBD) approved driveway alarm and sensor. This may assist in alerting you of a potential intruder entering your driveway or garden
- If your catalytic converter is bolted on, you can ask for your local garage to weld the bolts to make it more difficult to remove.
- Alternatively, you can mark your catalytic converter. Please ensure any property marking is Secured by Design (SBD) approved
- You can even purchase a 'cage clamp' which is a cage device that locks in around the converter to make it more difficult to remove.
- Speak to your dealership about the possibility of installing a Thatcham approved alarm and tilt sensor that will activate the alarm should any thief try to jack the vehicle up to steal the converter

If you see someone acting suspiciously under a vehicle, report it to the Police. Obtain as much information as possible, including any vehicle registrations.



Catalytic Converter

Try to get into the habit of following your own course of action when you lock up your home. Here's what we recommend you do before you go out:

- close and lock all your doors and windows, even if you're only going out for a few minutes
- double-lock any door
- make sure that any valuables are out of sight
- keep handbags away from the letterbox or cat flap and hide all keys including car keys, as a thief could hook keys or valuables through even a small opening
- never leave car documents or ID in obvious places such as kitchens or hallways
- in the evening, shut the curtains and leave lights on
- if you're out all day, then it's advisable to use a timer device to automatically turn lights and a radio on at night
- make sure the side gate is locked
- lock your shed or garage

lock your bike inside a secure shed or garage, to a robust fitting bolted to the ground or wall, like a ground anchor.

